

No: 90, November 1992

Bristol **CHESS TIMES**

The Magazine of the Bristol & District Chess League

80p



**A new season
gets underway...**



Bristol CHESS TIMES

Editor: John Richards
7 Maycliffe Park, Bristol,
BS6 5JH. Tel: 0272 551912

Subscriptions: £8.00 for ten issues (posted to a home address) or £6.00 for ten issues (collected from a Bristol League club). Send cheques payable to the Bristol & District Chess League to the Editor.

Printed by: Everest, 195 Cheltenham Road, Bristol BS6 5QX

Advertising: rates are available on request from the Editor.

Bristol Chess Times is the official magazine of the Bristol & District Chess League, but the opinions of the contributors do not necessarily reflect those of the Management Committee.

Games listings and diagrams are created using ChessBase.

No parts of this magazine may be reproduced without the prior express permission of the League. All rights reserved. © 1992.

CONTENTS

- 2 Editorial
- 2 League Notices
- 3 Around the Clubs
- 3 League Tables
- 4 Horfield's 50 years
- 5 Junior Chess
- 6 Quickplay finishes in the Bristol League
- 7 Letters to the Editor
- 8 Find Tal's Moves
- 8 Golden Jubilee Simul
- 8 Cup and league news
- 9 Da Sfidania, Misha
- 12 Radford and Summerill tie for first - League Congress Section 2
- 13 Hannover just scrape it
- 14 My 7 Memorable Games
- 16 Diary

Next issue: 7th January.

Editorial

Thank you to all the people who made nice comments about the last issue. This time there are a few more features and, I think, a better balance. Apologies to those whose articles have been held over - I haven't forgotten you.

Tribute to Tal

American Bill Maddex got every amateur's dream pairing in an open tournament - Mikhail Tal. Bill kindly agreed to let me print his story of what happened and it makes an interesting supplement to the obituaries by star players in the national magazines.

Opening Moves

As this issue was being finished off, I heard about an exciting new club for juniors, aged from 4 to 14, called *Opening Moves*. The club is planning to open on Sunday 1st November from 3:30 to 5:30, and every Sunday thereafter, at the QEH School Theatre, Jacob Wells Rd. Cost : 75p. This welcome initiative - there are not enough places for juniors to play in Bristol - is being organised by Clifton's Iain Bourne. Apart from getting lots of juniors, he desperately needs lots of adults to spare some time helping out. Iain can be contacted on 0272 668964.

National League

The BCF are proposing to start a National League next season. There will be about 12 teams, selected on both playing strength and financial backing. The League Management Committee have set up a working party to look at the possibilities of getting a Bristol, or perhaps West of England, team into the League. It would be a real pity if Bristol were to miss out on this opportunity. Any one with views on the matter should contact the League's General Secretary, Alan Williams.

League Notices

Entries are invited for four person teams to play in a new Division 7. Entries to the Match Secretary, Chris Carter, by 10th November.

The 50 moves rule has been reinstated to the Laws with immediate effect. There are now no special cases.

Corrections to fixtures book:

Clifton: A Killey's STD code is 0453, not 0452. His postcode is GL5 5EZ. Civil Service: The secretary's name is *Dibble*. Sun Life sec's extension number is 3742. Cossham: Club phone number is 673103, not 650343. Bristol Royals have a new secretary: Chris Evans, 20 Somermead, Bristol, BS3 5QF. Tel: 636762.

Around the Clubs

GRENDDEL were the first winners of the summer lightning tournament in mid-August, beating COSSHAM by a big score in the final. They were presented with the new Kingston Trophy: a donation to the League by Mr and Mrs Gingell. Determined to go one step better next time, Cossham have been receiving the benefit of some training talks from Tyson Mordue.

GRENDDEL continued their successful summer by winning the Clevedon Jamboree with 7pts. Second were Clevedon with 5, then Nailsea 3, Thornbury and Weston-S-M 2½ each.

Thirteen year old Jack Rudd is a new signing for SOUTH BRISTOL. Jack has a rating of 178 and is likely to be the youngest ever top board player in Division One.

KEYNSHAM threw the new season's fixtures into chaos with a very late entry of a new C team into Division Six, just after the fixture books had gone to print.

BRISTOL OMNIBUS have renamed themselves the BRISTOL ROYALS, apparently because there no longer is a Bristol Omnibus company. Both the new ROYALS and CABOT have moved from the Avon Social Club. Details on the back cover of the fixture books.

HORFIELD would like to remind visiting clubs that they have to vacate the premises by 10:45. Hence, they will be strictly observing the rules this season and starting clocks at 7:30 prompt.

INDIVIDUAL KO entries cost just £1, but you must get your entry in by 9th November. Your club secretary should have the entry forms.

League Tables

Division 1

	Pld	DP	Pts
Bath	3	-	6
Horfield A	2	-	4
Clifton A	3	2	4
Downend A	3	5	4
Clifton B	1	1	2
Sea Mills A	2	-	2
University A	2	-	2
South Bristol A	3	-	2
Horfield B	3	1	0
Hanham A	4	-	0

Division 4

	Pld	DP	Pts
Hanham B	4	-	8
Cabot	4	4	8
Thornbury B	4	-	6
Horfield D	5	1	6
Keynsham B	3	-	4
Grendel C	5	-	4
Harambee A	4	-	3
Nailsea C	4	-	3
University C	2	-	0
South Bristol C	3	2	0

Division 2

	Pld	DP	Pts
Grendel A	4	-	8
Keynsham A	3	-	4
Thornbury A	3	-	4
Nailsea A	3	1	4
Cossham A	4	-	4
Clevedon A	3	-	3
Clifton C	4	-	2
Sun Life A	3	-	1
University B	1	-	0
Downend B	2	-	0

Division 5

	Pld	DP	Pts
Sun Life B	5	-	9
Clevedon C	4	-	7
Hanham C	3	-	5
Civil Service	3	-	1
Grendel D	0	-	0
University D	1	-	0
Downend D	3	-	0
Clifton E	3	6	0

All-Play-All 3 times

Division 3

	Pld	DP	Pts
Bristol Royals A	4	-	8
Nailsea B	5	-	8
Clevedon B	4	-	6
South Bristol B	4	2	6
Horfield C	4	-	5
Cossham B	3	-	4
Grendel B	4	-	2
Clifton D	4	-	1
Sea Mills B	4	-	0
Downend C	4	3	0

Division 6

	Pld	DP	Pts
Bristol Royals B	5	-	8
Hanham D	4	-	7
Nailsea D	5	1	7
Thornbury C	5	1	7
Keynsham C	2	2	4
Downend E	5	-	1
Grendel E	4	1	0
Harambee B	2	27	-2

All-Play-All 3 times

DP = Default Penalty Points. One league point has been deducted for every ten DPs.

Horfield's 50 years

Howard Millbank

During the early years of World War II, a group of firewatchers in northwest Bristol realised a common interest in chess. Thus it was on December 1st 1942, that Horfield Chess Club came formally into existence at 83, Radnor Road. Meetings were on Tuesdays from 6:30 to 10:30pm, and the first subscriptions were set at six shillings (30p) for six months.

Barely a year later the club moved to the Friends Meeting House at 300 Gloucester Road; premises which were to remain home for more than 36 years. By the 1945-46 season, Horfield ran three league teams and were Division I champions (the same trophy was also brought back to the Meeting House in 1949, '53 and '62). An early note, January '44, records that a mere 24% of games had been played in the club championship. Some things never change.

Prominent Horfieldians in the early years were H.J. Chapman and E.J. Dewfall. Mr Chapman was the club's strongest player, and he occasionally played simultaneously against the membership. On September 20th 1955, he took on 17 opponents (+8, =5, -3). Mr and Mrs Dewfall did much work for the club, and the former was the first to receive honorary life membership, in 1950.

Ivor Apsey was another, pre-metric, significant figure. He served on the League Management Committee and was given honorary life membership of the club in 1977. I remember him as a kindly and humorous captain of the 'A' team when I joined the club in the early seventies.

Back in the fifties young Jim Draisey, our secretary nowadays, occupied the next board to Chapman. He recalls doing worse in the latter's simultaneous displays than in single games. In 1991, the former Dewfall Trophy (for the club championship) was renamed the Draisey Trophy in recognition of Jim's unsurpassed service to Horfield. Jim was also captain of Gloucestershire for both postal and OTB chess in an era when the county team travelled together by motor coach.

Over the years, increases in rent prompted investigations of other possible accommodation such as the nearby Baptist Chapel and later (1968) the Gloucestershire County Cricket Club. However, the Quaker terms remained best, and it was only the arrival of a malevolent landlady in 1979 - she brought a new anxiety to time trouble by turning the lights out at 10pm - that finally forced a move. (Subsequently the dear old thing persuaded the Friends to convert the clubroom into a flat for herself!)

The stay at the Montpelier Hotel was short - just the 1980-81 season - but the move did gain several strong players: Martin Davies, Martyn Sellars and Alan Williams. A new landlord and huge rent increase (£25 per evening) sent the now Horfield & Montpelier Chess Club to 8, Maurice Road, St Andrews, for a season. Here the rental was set at a bottle of wine per week and we were joined by proto-chessbase Alex Easton. By now, the first team had returned to Division I after a long absence.

There followed two seasons at 31, Redland Grove, where we played under cut-glass chandeliers for a rent of £360, excluding the summer months. Summer closure was introduced as an economy measure in 1976. We moved to 1, Redland Park in September 1984 and have been there ever since, but it was only this year that the club decided to change its name to Horfield & Redland.

When I joined Horfield, nearly 20 years ago, it wasn't the first club I had visited as a newcomer to Bristol, but it was the first that made me feel immediately welcome. In those days the members all addressed each other as Mister, and preferred to wear jacket and tie. I recall the then secretary, John Webb, blinking when I greeted him across the clubroom with "Hi there, Webbo!". In my time, membership numbers have been in the range 25 to 30, and although the standard of play and average age of members have moved considerably in opposite directions, I believe the warmth of the club welcome remains as strong as ever.

Horfield are celebrating their birthday with a simultaneous display by GM Stuart Conquest on 1st December. See page 8 for details.



JUNIOR CHESS

Jerry Humphreys

Welcome to the new league season for those juniors who played last year and welcome to the league for those who didn't! Most of you will have played several games by now, so I hope you will have at least one win to your credit!

How strong do you have to be to win games in Division 1? Daniel Sheppard, of Sea Mills, is graded just 106, but played well to beat Richard Palmer (141) of Downend:

Richard Palmer - Daniel Sheppard
Downend A-Sea Mills A 1992

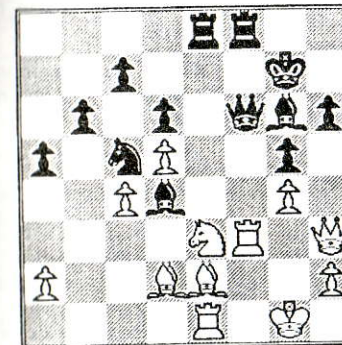
1.d4 ♖f6 2.e4 g6 3.♗c3 ♕g7 4.e4

The King's Indian Defence. White gets a strong centre - Black tries to undermine it.

4...d6 5.♗f3 0-0 6.♕e2 e5 7.d5 ♗fd7? 8.0-0 ♗f5 9.♗g5 ♗c5 10.♗c2 a5 11.♕d2 b6 12.♗f3 ♗xe4 13.♗xe4 ♗xe4 14.♗xe4 ♕f5 15.♗h4 g5 16.♗g3 e4 17.♗e1

Black is already winning. His two bishops are very strong.

17...♕xb2 18.♕d1 ♕e5 19.♗b3 b6 20.g4 ♕g6 21.♗h3 ♗g7 22.♗g2 ♗d7 23.♗e3 ♗f6 24.♕del ♗c5 25.♗d1 ♕ae8 26.f3 ♕d4+ 27.♗e3 exf3 28.♕xf3



28...♕xe3! 29.♕xe3

29.♕xf6 ♗xh3+ 30.♗g2 ♕xf6 31.♗xh3 leaves Black a piece up.

29...♗f2+ 30.♗h1 ♕xe3 31.♕c3+ ♗h7 32.♕f1

Losing immediately, but Black was threatening ...♕e4+ in any case

32...♗g1+ # 0-1

You do not have to play in Division 1 to have your games published. One game will be published in each issue, and you are welcome to send any of your wins to Chess Times.

Thornbury Chess Club

Thornbury have always been keen to recruit new juniors and their Secretary, David Evans, has spent a lot of time giving coaching to promising players. Now a new 'C' team captain, Mike Minshall, has arrived and has a squad of four juniors. Andrew Dugdale, Paul Waller and Neil Harris go to Marlwood School and Darren Minshall to Castle School. Andrew is the strongest of the four, with a grade of 75.

Thornbury has a club evening every Tuesday and matches on Wednesday (C team) and Fridays (A and B). So, if you live in the area, why not drop in on a Tuesday?

Thornbury are keen to play a friendly match against another league club. If you have a team of four juniors and would like to play, contact me on Bristol 650097.

Duke of Edinburgh Award

Did you know that chess is included in the 'skills' section of the Duke of Edinburgh Award? You do not even have to know the moves to start with. Just attend a chess club regularly for the period of the award, and show interest and achievement over that time. If you are interested, or know someone who might be, please get your D-of-E organiser to contact me to find out more and make arrangements with a suitable club.

■ BRISTOL'S Steve Boniface has been elected one of three Direct Members' representatives on BCF Council. Direct Members can contact him on 0272 515869.

Quickplay Finishes in the Bristol League

Steve Boniface

For the second time in recent years, Bristol Chess League has voted by a narrow margin not to adopt allegro finishes in League matches (this time there was a majority in favour, but it just failed to gain the necessary two-thirds - Ed.). As on the previous occasion, there was a certain amount of confusion owing to the vague nature of the proposal, coupled with its introduction just before 11pm, leaving little time for explanation or discussion. This I suggest is the main reason for its defeat. My own reasons for opposing the motion:

1. Unlike weekend congresses, there is no need for games to be finished on the night. Adjournments are available and best.

2. The time allocated for evening games is too short to justify escalation into quickplay.

3. The arrangements for administering the allegro finish need to be worked out very precisely, as well as who is to deal with problems and disputes if and when they occur.

I am not totally opposed to such finishes, but they need to be strictly regulated and policed. To deal with each point in turn:

1. Adjudications should be eliminated. Endgame play ought to be encouraged. Therefore my preference is for adjournments, followed by allegro finishes, with adjudications third choice.

2. In congresses, allegro finishes usually only take place after 40 or 42 moves (2 hours or 105 minutes each). Thirty six or, worse still, thirty moves is too early for quickplay. Our evening sessions allow only 3 hours 30 minutes maximum play. However, I have no serious objection to a sudden-death finish after two "normal" sessions, provided BOTH players agree. (This is to discourage a player in a "lost" position from gambling on the chances in a

fast ending).

3. My main objection. Only a supreme optimist would claim there would not be any problems with approximately 3000 games in the League. A large congress will have perhaps 500 games in a weekend with perhaps 3 or 4 vigilant controllers. In a League fixture with no independent judges, I would expect at least 50 incidents per year. For those who think this is alarmist, this is only one per 60 games. Some problems, of course, are easily solved on the spot by the arbiters. In matches, it is usual practice for the captains to act in concert to solve disputes. Unfortunately, in a six-board match this could affect three boards. And what happens if one captain is himself involved in a dispute? And even if the dispute is settled, what effect will the ensuing delay have on the conclusion of the match on the night (the reason for such finishes...)

Reference to the rule book is NOT sufficient (even if the situation is covered, and even if the club has such a book). Many problems involve a player's actions, which can only be dealt with by an independent judge. Of course, such events can occur outside the quickplay session, but the consequences tend to be more drastic in this case. I list a few of the difficult areas:

1. Players not recording moves.
2. Flag falls. Who judges?
3. Player makes no attempt to win on the board, waiting to win on time.
4. Player claims a draw on the grounds that his opponent is unable to win by normal means.
5. Clock abuse.
6. Illegal moves.

All these, and more, have special significance in allegro play. It requires skill, judgment, objectivity and experience to make these difficult decisions. Is this likely to be made by two captains who are perhaps

in difficult fast finishes themselves? Some County captains are already recognizing the sense in having an independent arbiter present. Matches in the Bristol Pub Quiz League have an independent questionmaster. Why should this be considered impossible for chess?

It was claimed at the AGM that the Derbyshire League, among others, had allegro finishes with no difficulties. I would like to examine their rules and, if necessary, adopt them with their experience. However, I reiterate that it is not the Laws but their administration which will be the critical point.

"Only a supreme optimist would claim there would not be any problems ..."

Meanwhile, may I suggest three items for consideration:

1. A working party should be set up to examine all aspects of allegro finishes as applied to the League, and to report back to the Management Committee so that a proper set of proposals can be presented at the next AGM or, in view of the amount of discussion that is likely to be generated, an extraordinary meeting of the League.
2. We set up a training school for officials in Bristol
3. Clubs take it upon themselves to:
 - a. obtain a copy of the Laws of Chess
 - b. ensure that their players read and understand it
 - c. nominate at least one person for training as an official.

Otherwise we can dream that nothing will ever go wrong...

Letters to the Editor



Letters have been edited for the purposes of clarity and space.

■ I much enjoyed issue no 89 of BCT and the lively local news. The p11 Perot tale reminded me of primary school when my opponent, after a dozen moves or so, zig-zagged his rook down into my position. 'You said it could move upwards and sideways' he rightly pointed out. Unfortunately the teacher supported him, but I stuck at the game regardless.

However, your claim that the St Paul's Carnival was the first time that the League 'took to the streets' cannot go unchallenged.

One summer day in the mid-1980s, the BCF declared a National Chess Day to promote chess (times have changed since then). As the League's Press Officer I vaguely agreed to arrange something, Richard Johnson equally vaguely arranged to produce some leaflets, which Alistair Brown printed, and Dave Collier and Ken Derrick also vaguely nodded. Then, as now, it was pretty vague.

We set up shop at the foot of College Green to take on all-comers, no charge, no prizes. It was a very windy day, so rooks, pawns and knights (being closest to the edge) frequently blew away, pursued by Dave and myself and assorted schoolkids. Richard's leaflets blew away towards the Watershed. Even Queen Victoria's statue must have been amused. Ken, incidentally, had adopted the sensible position of bar fly in the pub opposite for most of the afternoon, but did manage to negotiate for us to have a pint each, despite the distance...

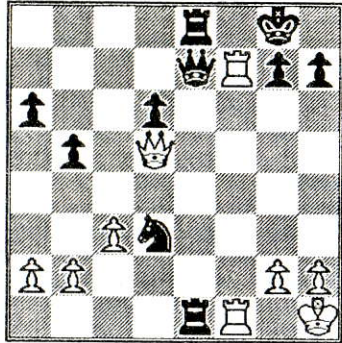
Around 6pm I was delighted to hear Radio Bristol report the event on their Sports Roundup. Fortunately (or not), their report was based on my press release before the match rather than the bizarre reality.

Best wishes for the next St Paul's Festival. Perhaps the BCET should provide free umbrellas?

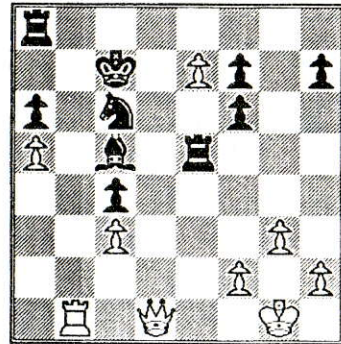
Alan Ashby Milton Keynes

Find Tal's Moves

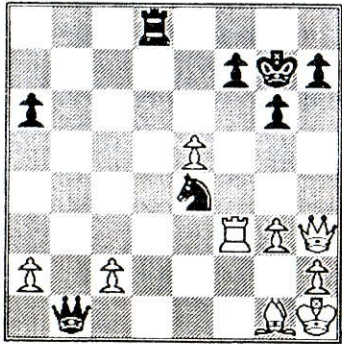
Four positions illustrating the genius of Mikhail Tal. Answers on page 16. All four positions are taken from P.H. Clarke's book, *Mikhail Tal's Best Games of Chess*, Bell 1961.



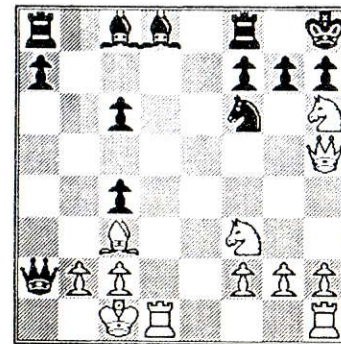
A: A Khasin - M Tal
23rd USSR ch, Leningrad 1956
Black to move



B: M Tal - D Keller
Zurich 1959
White to move



C: E Walther - M Tal
Zurich 1959
Black to move



D: M Tal - V Smyslov
Candidates, Bled 1959
White to move

Golden Jubilee Simul

GRANDMASTER STUART CONQUEST will give a simultaneous display over 30 boards at Horfield on Tuesday 1st December to celebrate the club's 50th birthday. It's likely there will be a few places available for non-Horfield members. To book a place, it costs £5, phone Howard Millbank on 0272 622087. First come, first served.

Cup and League News

Downend beat Harambee in the first round of the League KO. In the other first round match, it is rumoured that Clevedon have caused an upset by beating the University.

Grendel have entered an extra team in the League. The new D team has been placed in Division 5, and their old D team in Division 6 is renamed Grendel E.

Bristol CHESS TIMES

Grading Supplement

This grading supplement contains the 1992 grades for all Bristol & District League players. The data has been taken from the national grading list by kind permission of the British Chess Federation.

In order to fit all the grades into the available space, certain steps have been taken: all players with grades of zero have been removed; players' reference numbers and their junior status have been omitted; and where a player is listed as belonging to more than one club, only the first mentioned club is given here. To get the full information, buy a national grading list, price £8 (£6 to BCF Direct Members), from the BCF, 9a Grand Parade, St Leonards-on-Sea, East Sussex, TN38 0DD.

Any suspected errors in this list can be reported, in writing please, to the League's Grading Officer (see Fixture Book for address).

Name	Club	This	Last	Name	Club	This	Last
ACZEL J	BRISTOL UNIV	*100	(99)	BOWEN DJ	SOUTH BRISTOL	*115	(115)
ATCHISON K	HACKNEY	* 94	(87)	BOYCE JR	BRISTOL & CLIFTON	A167	(190)
ALCOORN T	BRISTOL & CLIFTON	E157	(156)	BRACKIN D	SEA MILLS	* 83	()
ALLAWAY P	BRISTOL OMNIBUS	C 84	(65)	BRADLEY CC	HANHAM FOLK CEN.	C152	(157)
ANDERSON W	HARAMBEE	* 28	(28)	BRAY T	DUKESLEY	*104	(94)
ANDRES JK	SOUTH BRISTOL	* 41	(50)	BREEZE G	BRISTOL HORFIELD	A159	(159)
ANDREWS R	COSSHAM(BRISTOL)	E 75	()	BRIDGEMAN M	BRISTOL GRENDEL	B 84	(76)
ANDREWS S	BRISTOL GRENDEL	* 17	()	BROOKEN ME	DOWNEND&FISHPOND	C185	(182)
ANSELL STUART	BRISTOL UNIV	*135	(135)	BRIGHT OLIVER N	BRISTOL & CLIFTON	* 67	()
ANSTIEY M	HANHAM FOLK CEN.	* 58	(76)	BRITTEN B	DOWNEND&FISHPOND	* 22	()
ARNEY JAMES E	BRISTOL UNIV	*156	(156)	BRITTON K	BRISTOL GRENDEL	D 65	(98)
ARUNLANDHIY T	BRISTOL UNIV	*155	()	BROADWAY T	HANHAM FOLK CEN.	C 95	(100)
ASHBY AP	BRISTOL UNIV	D156	(0)	BROOKES CJ	SOUTH BRISTOL	C 74	(89)
ASHFORD M	SEA MILLS	A207	(88)	BROOKS DH	CLEVEDON	D143	()
ASHLEY ER	BRISTOL SUN LIFE	C117	(106)	BROWN C	THORNBURY BRISTL	D 92	(94)
ASHLEY J	BATH	* 93	(96)	BROWN D	HANHAM FOLK CEN.	*137	(133)
ASHTON G	BRISTOL OMNIBUS	* 62	()	BROWN GRAHAM M	HANHAM FOLK CEN.	A141	(146)
AUSTIN D	HANHAM FOLK CEN.	*137	(117)	HARAMBEE	HARAMBEE	E 54	(54)
AXON CJ	SOUTH BRISTOL	* 97	(97)	HARAMBEE	HARAMBEE	D151	(151)
AYRES JR	STANES	D 76	(87)	HARMON	NALSEA	A158	(159)
AYTON B	BRISTOL & CLIFTON	*115	(120)	CLEVEDON	CLEVEDON	A158	(159)
BACON R	BRISTOL HORFIELD	*102	()	BRISTOL OMNIBUS	BRISTOL OMNIBUS	* 87	(96)
BADLAM D	DOWNEND&FISHPOND	D120	(119)	RUSHBURY	A213	(218)	
BAGSHAW P	BRISTOL HORFIELD	*116	(115)	BURN W	HANHAM FOLK CEN.	C100	(108)
BAGSHAW PJ	SOUTH BRISTOL	D121	(134)	BURGESS GRAHAM	DOWNEND&FISHPOND	A208	(206)
BAINBRIDGE O	SOUTH BRISTOL	C121	(116)	BURTON A	NALSEA	D 68	(8)
BAKER A	BRISTOL & CLIFTON	C 76	(57)	BURTON D	SEA MILLS	D 79	(75)
BAKER CHRIS W	BRISTOL CABOT	C 87	(82)	BURNS L	SEA MILLS	* 91	()
BAKER JC	NORTHAMPTON	A218	(218)	BURNS TM	BRISTOL SUN LIFE	* 38	()
BAKER J	BRISTOL CENTRAL	A131	(136)	HARAMBEE	E 44	(45)	
BAKER S	BRISTOL & CLIFTON	C167	(174)	HART J	BRISTOL & CLIFTON	D 32	()
HALE A	BRISTOL & CLIFTON	*191	()	HART T	KEYNSHAM	*111	(112)
HANNER M	KEYNSHAM	* 70	(63)	HARTON W	HANHAM FOLK CEN.	E 74	()
HARLOW RJ	BATH	* 99	(112)	HURTS J	HANHAM FOLK CEN.	*110	()
HARNABY P	WEST MID. MUN.	A145	(155)	HURTS T	BRISTOL HORFIELD	* 85	(85)
HARNETT MJ	BRISTOL CENTRAL	E105	()	IBLER T	SEA MILLS	C117	(98)
HARR S	CIVIL SERVICE BL	*107	(107)	CAMERON GA	BRISTOL SUN LIFE	* 53	()
HARTLETT P	BATH	* 97	(97)	CAPEL I	SEA MILLS	* 54	()
HATEMAN D	SOUTH BRISTOL	* 45	()	CARLESS S	DOWNEND&FISHPOND	* 77	()
HEARD J	DOWNEND&FISHPOND	* 97	(97)	CARROLL H	BRISTOL HORFIELD	C141	(129)
HEALMONT CHRIS	BRISTOL CABOT	C 61	(68)	CARTER CM	BRISTOL GRENDEL	* 45	()
BELLINGHAM A	BRISTOL & CLIFTON	B209	(212)	CASTRO J	BRISTOL UNIV	*113	(113)
BENNETT D	CLEVEDON	* 92	(90)	CLAMBERS SIT	CLEVEDON	C 57	(58)
BENNETT M	BRISTOL UNIV	* 99	(102)	CHANDLER MJ	KEYNSHAM	E 97	(97)
BERRY R	HANHAM FOLK CEN.	D 73	(71)	CHANDLER S	BRISTOL UNIV	* 80	(80)
BEST J	THORNBURY BRISTL	C 82	(85)	CHAPLAIN P	DOWNEND&FISHPOND	*111	(91)
BIDDICK EIS	BRISTOL CENTRAL	* 22	()	CHIDGUY K	BRISTOL OMNIBUS	*120	(114)
BIDDICK M	COSSHAM(BRISTOL)	*113	(108)	CHINNICK M	THORNBURY BRISTL	E126	(131)
BILLOWS R	HANHAM FOLK CEN.	A136	(144)	CHINNICK TZ	DOWNEND&FISHPOND	* 37	(54)
BINKS ME	HANHAM FOLK CEN.	*104	(103)	CLOSE FM	BATH TRAMWAYS	*156	(151)
BIRCH P	NALSEA	C 99	(104)	CLARKE A	BRISTOL GRENDEL	C108	(106)
BIRD J	DOWNEND&FISHPOND	D175	(181)	CLARKE D	NALSEA	* 71	()
BIRD M	DOWNEND&FISHPOND	* 61	(80)	CLEEVES S	NALSEA	E 37	(39)
BISHOP J	BRISTOL CENTRAL	* 73	(104)	CLIFTON H MS	BRISTOL OMNIBUS	* 30	(30)
BLISS DE	NALSEA	C105	(95)	CLIFTON RL	SEA MILLS	D 84	(78)
BOLTON A	BRISTOL UNIV	*126	()	CLOSE JM	BRISTOL SUN LIFE	* 73	()
BONIFACE SR	BRISTOL SUN LIFE	E 58	(62)	COLE WJ	PINNER	A156	(158)
BOOKER M	BRISTOL GRENDEL	D151	(143)	COLES A	CLEVEDON	D105	(111)
BORKOWSKI JA	BRISTOL GRENDEL	E101	()	COLFER JENNIFER	MARLOWOOD SCHOOL	D 82	(0)
BORTHWICK S	SEA MILLS	A164	(160)	COLFER RICHARD	BRIDGWATER	E108	()
BOURKE A	BRISTOL UNIV	* 23	()	COLLIER DO	BRISTOL & CLIFTON	A186	(186)
BOURNE I	BRISTOL HORFIELD	D135	(137)	COLLIER MJ	BRISTOL CABOT	C137	(134)
BOURNE THOMAS	BRISTOL & CLIFTON	C155	(157)	COLLINS C	HANHAM FOLK CEN.	* 81	(81)
BOWDEN D	BRISTOL & CLIFTON	D 29	()	COMLEY R	BATH UNIVERSITY	A151	(138)
BOWDEN P	DOWNEND&FISHPOND	* 29	()	CONIBEAR D	THORNBURY BRISTL	C 79	(72)
	CLEVEDON	E123	()	CONNOR JH	CLEVEDON	C119	(123)

Name	Club	This	Last
CONQUEST C	SEA MILLS	B123	(109)
CONQUEST STUART	SEA MILLS	A237	(237)
CONWAY D	BRISTOL OMNIBUS	C 92	(93)
CONWAY J	BRISTOL PEGASUS	* 92	(81)
CONWAY M	BRISTOL UNIV	E 94	(-)
COOK PL	BRISTOL SUN LIFE	*114	(102)
COOKS	THORNBURY BRISTL	* 54	(-)
COOKS S	BRISTOL GRENDEL	D135	(142)
COOPER AC	BRISTOL & CLIFTON	A184	(191)
COPELAND G	GLOUCESTER	B193	(189)
COULBECK AK	HANHAM FOLK CEN.	*135	(123)
COULSON C	BRISTOL HORFIELD	* 38	(86)
COUNSELL T	BRISTOL & CLIFTON	* 43	(43)
COY TM	BATH	D 83	(91)
COY P	NAILSEA	E 46	(-)
CRAM M	BRISTOL & CLIFTON	E161	(154)
CREWE B	BRISTOL HORFIELD	D115	(127)
CRICHTON S	SEA MILLS	E 49	(-)
CROOT R	BRISTOL UNIV	C126	(112)
CRUCKSHANK WA	DURSLEY	*114	(128)
CURLIM J	BRISTOL & CLIFTON	D166	(155)
CUMMINGS P	CLEVEDON	E 86	(74)
CUSICK PW	GLOUCESTER	B155	(140)
CZUDEK R	WINTERBOURNE	*111	(104)
DANDHU SS	BRISTOL SUN LIFE	* 45	(45)
DANIELS L	WINTERBOURNE	*105	(119)
DANIELS M	WINTERBOURNE	C120	(122)
DARBY C	KEYNSHAM	* 56	(56)
DATHI R	DURHAM COLLEGE	E155	(130)
DAVEY D	BRISTOL & CLIFTON	*106	(111)
DAVIES MS	BRISTOL HORFIELD	C184	(179)
DAVISON R	BRISTOL CENTRAL	*137	(96)
DAWE GN	BRISTOL SUN LIFE	* 25	(-)
DAWSON G	BRISTOL GRENDEL	* 51	(39)
DAWSON W	BRISTOL HORFIELD	* 110	(110)
DAY PF	DURSLEY	C158	(154)
DAY RK	BRISTOL OMNIBUS	* 46	(-)
DAY GAY J	SEA MILLS	* 46	(-)
DE MEER F	KEYNSHAM	D 89	(-)
DEAN A	DURSLEY	C118	(119)
DEAN MS	KEYNSHAM	B132	(137)
DEAR M	BRISTOL HORFIELD	C138	(136)
DEBBIE M	CIVIL SERVICE BL	C 86	(84)
DICKS D	DOWNEND&FISHPOND	C178	(180)
DILLEIGH SP	SEA MILLS	A191	(189)
DIPPER M	BRISTOL GRENDEL	*153	(153)
DODD N	SEA MILLS	E115	(-)
DODDS R JNR	CLEVEDON	* 44	(-)
DOE M	KEYNSHAM	*118	(118)
DORLEY BROWN S	BATH	C131	(128)
DOXEY M	BRISTOL UNIV	*132	(122)
DRAISEY IJ	BRISTOL HORFIELD	*126	(121)
DRING GD	CLEVEDON	C136	(131)
DUGDALE A	THORNBURY BRISTL	D 75	(61)
DUGDALE D	THORNBURY BRISTL	C158	(167)
DUNN A	BRISTOL GRENDEL	C113	(114)
DURIEN IJ	BRISTOL & CLIFTON	D 65	(-)
DURIANT A	HARAMBEE	C 82	(69)
EAST R	HANHAM FOLK CEN.	* 60	(60)
EASTON A	BRISTOL HORFIELD	B194	(192)
EDWARDS J	HANHAM FOLK CEN.	D 80	(81)
EDWARDS T	WINTERBOURNE	*130	(131)
EGGINTON DAVID	NAILSEA	A168	(153)
EGITTO C	SOUTH BRISTOL	* 40	(40)
ELIOTT J	HANHAM FOLK CEN.	* 43	(43)
ELLIOTT SEAN J	DOWNEND&FISHPOND	*184	(184)
ELPHICK D	BRISTOL HORFIELD	D 62	(-)
EMBLIN SR	BRISTOL GRENDEL	D 73	(68)
ESKELL R	NAILSEA	* 40	(40)
EUGENE R	HARAMBEE	* 58	(58)
EVANS B	BRISTOL UNIV	*60	(60)
EVANS C	BRISTOL OMNIBUS	*158	(151)
EVANS DR	THORNBURY BRISTL	B138	(141)
EVANS M	DOWNEND&FISHPOND	E139	(140)
EVANS M	BRISTOL CABOT	*119	(119)
EVANS P	BRISTOL CABOT	C 87	(86)
EYLER RJ	BATH	D180	(-)
FANNA M	KEYNSHAM	* 85	(85)
FARRIN M	KEYNSHAM	*129	(129)
FARRINGTON BJ	THORNBURY BRISTL	A149	(145)
FATHERS J	PLYMOUTH COLLEGE	*114	(106)
FAUKNER MJ	BATH	*150	(-)
FAWCETT JK	DOWNEND&FISHPOND	D150	(128)
FEE R	BRISTOL GRENDEL	* 6	(-)
FEEY M	BRISTOL & CLIFTON	E 44	(51)
FENWICK K	DOWNEND&FISHPOND	*158	(111)
FERRIS W	SEA MILLS	D188	(111)
FIELD M	BRISTOL UNIV	* 21	(33)
FIEREK E	BRISTOL & CLIFTON	E126	(-)
FINNEMORE SR	BRISTOL HORFIELD	C115	(109)
FISHER F	DOWNEND&FISHPOND	* 60	(-)
FLETCHER B	BRISTOL & CLIFTON	* 97	(106)
FLETCHER D	BRISTOL & CLIFTON	* 79	(79)
FLETCHER E	SEA MILLS	*215	(215)
FLETCHER EDWIN A	BRISTOL & CLIFTON	B 90	(98)
FOSTER D	BRISTOL & CLIFTON	* 93	(99)

Name	Club	This	Last
FOWLER GD	SOUTH BRISTOL	*128	(128)
FRANCIA G	BRISTOL UNIV	* 86	(-)
FRANCIS D	BRISTOL HORFIELD	*167	(117)
FREEMAN EDWARD	SEA MILLS	A160	(-)
FREEMAN T	BRISTOL UNIV	*167	(-)
FRY IS	BRISTOL GRENDEL	C114	(117)
FURBER I	SEA MILLS	*143	(140)
FURMISTON MP	BRISTOL & CLIFTON	D171	(169)
FURMAN JP	CLEVEDON	* 77	(-)
GAGE F	HANHAM FOLK CEN.	D 41	(42)
GARDENER J	DOWNEND&FISHPOND	D 45	(23)
GEE C	CLEVEDON	* 74	(75)
GEOGHEGAN TE	SEA MILLS	C137	(140)
GEORGE A	BRISTOL & CLIFTON	D106	(114)
GHULAN J	HARAMBEE	* 55	(55)
GILBORSON M	COSSHAM(BRISTOL)	E 96	(106)
GILES C	SOUTH BRISTOL	C125	(125)
GILL MARTIN S	BRISTOL UNIV	*120	(139)
GINGELL M	DOWNEND&FISHPOND	A148	(151)
GLADSTONE M DR	NAILSEA	C151	(148)
GOATCHER MW	BRISTOL UNIV	E 93	(114)
GOLDING PA	CLEVEDON	*142	(135)
GOLDING T	WINTERBOURNE	* 92	(92)
GOLDING A	THORNBURY BRISTL	E156	(161)
GOULD J	HANHAM FOLK CEN.	E135	(133)
GOURLAY D	BRISTOL HORFIELD	C 91	(82)
GRANT PC	KEYNSHAM	C107	(118)
GREEN I	BRISTOL & CLIFTON	*150	(173)
GREEN M	ROYAL AIR FORCE	C108	(104)
GREENLAND G	BRISTOL GRENDEL	C 97	(109)
GREGORY A	BATH	E117	(119)
GREGORY IJ	BRISTOL OMNIBUS	*136	(152)
GREGORY RW	BATH	*136	(152)
GRIFFEE J	DOWNEND&FISHPOND	C110	(109)
GRINFELDS G	DURSLEY	E132	(-)
GURDEN S	BRISTOL UNIV	* 77	(77)
GUYATT FJ	DOWNEND&FISHPOND	D 84	(89)
HACKER R	CIVIL SERVICE BL	D 54	(52)
HADEN M	DOWNEND&FISHPOND	* 15	(-)
HALE M	BRISTOL CENTRAL	C115	(124)
HALL A	NAILSEA	* 41	(41)
HALL E	DOWNEND&FISHPOND	C 98	(93)
HALL S	SEA MILLS	D117	(104)
HANCOCK C	KEYNSHAM	E 73	(80)
HANCOCK D	KEYNSHAM	* 52	(66)
HANCOCK J	BRISTOL CABOT	* 13	(-)
HANCOCK M	BRISTOL CENTRAL	C165	(153)
HARDING SC	KEYNSHAM	*131	(130)
HARDY R	SEA MILLS	A157	(156)
HARPER S	SOUTH BRISTOL	* 98	(98)
HART J	BRISTOL HORFIELD	E152	(-)
HARTLEY J	BRISTOL OMNIBUS	* 78	(-)
HARVEY J	DURSLEY	C115	(117)
HASSAL G	BRISTOL GRENDEL	* 47	(47)
HASSALL G	BRISTOL GRENDEL	* 68	(47)
HASSON P	DOWNEND&FISHPOND	D184	(184)
HAYDON R	BRISTOL & CLIFTON	A193	(193)
HAYWARD G	CLEVEDON	* 47	(47)
HEADLONG T	BRISTOL & CLIFTON	A188	(186)
HELDY D	BRISTOL UNIV	*156	(156)
HELBIG DJ MRS	KEYNSHAM	A104	(110)
HELBIG PD	BATH	A186	(187)
HELBIG S	KEYNSHAM	A100	(100)
HENDY JS	KEYNSHAM	A128	(144)
HENNIGAN MT	BRISTOL UNIV	A228	(222)
HERBERT DC	BRISTOL SUN LIFE	C164	(173)
HERMAN JM	BRISTOL SUN LIFE	* 60	(-)
HEWITT J	BRISTOL OMNIBUS	*128	(128)
HEWITT T	DOWNEND&FISHPOND	D 56	(47)
HEWSON J	BRISTOL & CLIFTON	* 15	(-)
HBBARD J JNR	HANHAM FOLK CEN.	D 68	(-)
HGGINBOTTOM F	DURSLEY	E138	(-)
HIGGINS B	NAILSEA	*119	(120)
HIGGINS RJ	BRISTOL & CLIFTON	D123	(-)
HIGHAM C	BRISTOL UNIV	* 50	(-)
HILL AL	SOUTH BRISTOL	*178	(178)
HILL C	BRISTOL PEGASUS	* 17	(43)
HILL R	SEA MILLS	D 89	(92)
HILLER K	SOUTH BRISTOL	C114	(112)
HILLMAN JH	BRISTOL UNIV	* 32	(58)
HENCHIFFE G	THORNBURY BRISTL	* 88	(85)
HIPWELL BD	DURSLEY	B137	(137)
HISCOX D	SEA MILLS	D 78	(80)
HODGSON S	BRISTOL UNIV	* 65	(72)
HOLLYMAN P	BRISTOL & CLIFTON	* 89	(-)
HOLMES A	BRISTOL OMNIBUS	* 80	(82)
HOLROYD N	NAILSEA	*171	(168)
HOPKINS R	COSSHAM(BRISTOL)	*124	(104)
HORLOCK P	BRISTOL GRENDEL	*129	(129)
HOUGH D	WINTERBOURNE	*122	(114)
HOUSE KC	COSHAM(BRISTOL)	C153	(158)
HOUSE ML	SOUTH BRISTOL	C135	(139)
HOUSE V	NAILSEA	D 85	(102)
HOWARD M	BRISTOL UNIV	D117	(-)
HOY J	BRISTOL UNIV	* 60	(60)
HUDSON D	BRISTOL & CLIFTON	A103	(109)

Name	Club	This	Last
HUGHES MA	THORNBURY BRISTL	* 93	(101)
HUGHES MW	SOUTH BRISTOL	* C114	(116)
HUMPHREYS J	DOWNEND&FISHPOND	A184	(176)
HUNT C	BRISTOL & CLIFTON	B178	(152)
HUNT C	BRISTOL HORFIELD	*151	(-)
HUNT F	BRISTOL OMNIBUS	E 8	(-)
HUNT L	BRISTOL & CLIFTON	D 72	(61)
HUNT L	BRISTOL HORFIELD	*106	(-)
HUNT W	DOWNEND&FISHPOND	*136	(125)
HURSE M	BRISTOL OMNIBUS	D 83	(80)
ILES DK	SOUTH BRISTOL	* 15	(-)
IONIDES E	BRISTOL UNIV	* 54	(-)
IONIDES JMC	BARRICAN	D121	(133)
JARVELD C	BRISTOL GRENDEL	*164	(-)
JAMES J	BRISTOL UNIV	E164	(-)
JAMES M	WINTERBOURNE	* 90	(87)
JARRETT DC	SOUTH BRISTOL	*175	(160)
JARVIS B	DOWNEND&FISHPOND	E 34	(-)
JARVIS R	DOWNEND&FISHPOND	E 31	(-)
JEFFERIES A	BRISTOL OMNIBUS	D 61	(52)
JELFS C	KEYNSHAM	* 79	(79)
JENKINS D	CIVIL SERVICE BL	* 79	(92)
JENKINS DP	JENKINS M	C102	(97)
JENKINS M	BRISTOL GRENDEL	D 57	(67)
JOHNSON A	BRISTOL GRENDEL	D109	(-)
JOHNSON PD	DOWNEND&FISHPOND	C115	(113)
JOHNSON PD	KEYNSHAM	* 83	(83)
JOHNSON RJ	BRISTOL GRENDEL	*157	(158)
JONES B	BRISTOL SUN LIFE	E127	(123)
JONES CJA	BRISTOL & CLIFTON	*123	(125)
JONES DA	SOUTH BRISTOL	C160	(165)
JONES DAVID	BRISTOL HORFIELD	D157	(153)
JONHLS C	SOUTH BRISTOL	C106	(101)
JONES DS	NAILSEA	E108	(-)
JONES HL	BRISTOL OMNIBUS	* 26	(-)
JONES K	CLEVEDON	A103	(113)
JONES K	HANHAM FOLK CEN.	* 69	(68)
JONES M	NAILSEA	* 104	(-)
JONES M	THORNBURY BRISTL	* 81	(81)
JONES M	NAILSEA	* 45	(45)
JONES P	BRISTOL CENTRAL	D110	(-)
JONES PD	BRISTOL & CLIFTON	*105	(105)
JONES RS	NAILSEA	E 59	(52)
JONES T	SEA MILLS	E 20	(20)
JORDAN M	BRISTOL UNIV	E 64	(52)
KANAGARATNAM S	SEA MILLS	* 22	(-)
KATONA S	BRISTOL UNIV	* 81	(81)
KAY S	BRISTOL UNIV	* 75	(75)
KENDRY A	SEA MILLS	*153	(-)
KIFF RJ	THORNBURY BRISTL	A152	(156)
KIFFN N	BRISTOL GRENDEL	C128	(137)
KILLEY A	BRISTOL & CLIFTON	C149	(145)
KILLEY M	CLEVEDON	* 87	(79)
KIRKLAND R	HANHAM FOLK CEN.	E 45	(45)
KIRKLAND R	BRISTOL UNIV	E 81	(-)
KISAKI T	BRISTOL UNIV	* 98	(98)
KRUGER A	BRISTOL & CLIFTON	E134	(139)
LASSMAN I	BRISTOL OMNIBUS	* 51	(47)
LAVINGTON P	SEA MILLS	*127	(-)
LAW ANDREW P	BRISTOL & CLIFTON	B212	(209)
LAWRENCE AM	BRISTOL SUN LIFE	D133	(132)
LAWRENCE R	CLEVEDON	D 91	(90)
LEAR RE	BRISTOL SUN LIFE	* 32	(32)
LEDBURY MA	BATH	D140	(141)
LEE W	DURSLEY	E113	(117)
LEMOIR S	BRISTOL GRENDEL	* 32	(32)
LEMOIR S	BRISTOL GRENDEL	E 81	(-)
LEVEYNE M	BRISTOL & CLIFTON	*159	(150)
LINDLEY M	BRISTOL & CLIFTON	*130	(128)
LINDUP P	SEA MILLS	D 43	(-)
LINES I	CIVIL SERVICE BL	D 88	(83)
LLOYD SJ	BRISTOL & CLIFTON	*128	(110)
LOCK B	BRISTOL & CLIFTON	C162	(159)
LOCK F	BRISTOL OMNIBUS	* 50	(-)
LOCK G	BRISTOL UNIV	* 50	(-)
LOCK RJ	WINTERBOURNE	*156	(156)
LONG P	WINTERBOURNE	* 66	(66)
LONG R	HANHAM FOLK CEN.	D 53	(-)
LONG R	BRISTOL OMNIBUS	E110	(107)
LONG MAID K	WINTERBOURNE	*132	(114)
LONG MATHEW J	KEYNSHAM	A133	(101)
LOWERY RS	SEA MILLS	B135	(133)
LUDGATE NR	THORNBURY BRISTL	C161	(162)
LYNCH S	THORNBURY BRISTL	*111	(107)
MACKAY G	SOUTH BRISTOL	* 40	(-)
MAHONEY TO	BRISTOL & CLIFTON	*147	(150)
MALLET C	BRISTOL GRENDEL	E 93	(-)
MARLE MI	BRISTOL SUN LIFE	E 91	(125)
MARCHE DE	DOWNEND&FISHPOND	*135	(135)
MARKE TN	COSSHAM(BRISTOL)	A116	(126)
MARKKY KD	DURSLEY	C129	(138)
MARKS A	DOWNEND&FISHPOND	C121	(112)
MARKS JT	BRISTOL CENTRAL	C128	(128)
MARRNER C	BRISTOL SUN LIFE	C113	(120)
MARSH M	BRISTOL SUN LIFE	* 80	(98)
MARSHN C	BRISTOL SUN LIFE	* 80	(98)
MARSH PG	BRISTOL HORFIELD	* 94	(95)

Name	Club	This	Last
MATHER T	BRISTOL & CLIFTON	C126	(127)
MATHEWS R	BRISTOL UNIV	* 98	(-)
MAY D	CLEVEDON	D 67	(62)
MAYNE AP	KEYNSHAM	B120	(118)
MCATACKNEY A	DOWNEND&FISHPOND	* 31	(31)
MCCARTHY P	SOUTH BRISTOL	*141	(131)
MCCAUDER F	BRISTOL CABOT	* 51	(51)
MCCABE C	BRISTOL CABOT	C 96	(94)
MCCORMISH H	BRISTOL HORFIELD	* 89	(-)
MCDONOUGH T	SOUTH BRISTOL	D 75	(64)
MCINTOSH P	BRISTOL & CLIFTON	D120	(73)
MCONALLY J	DURSLEY	*197	(161)
MCWATERS ZZ	BRISTOL & CLIFTON	*139	(139)
MENSAH P	BRISTOL UNIV	*158	(158)
MEREDITH M	WINTERBOURNE	*109	(156)
MILLBANK HK	BRIST		

Name	Club	This	Last
QUINN S	DURSLEY	* 94	(94)
RABBITT M	DOWNEND&FISHPOND	C160	(162)
RADFORD BS	BRISTOL OMNIBUS	C 98	(100)
RAJFORD RP	BRISTOL OMNIBUS	B138	(128)
REDWOOD T	CLEVEDON	*121	()
REXWORTHY B	KEYNSHAM	D118	(113)
RICHARDS JE	BRISTOL HORFIELD	A163	(165)
RICHARDSON MJ	BRISTOL GRENDEL	E126	(130)
RICHMOND J MRS	SWINDON LH.S.	C181	(180)
RICHMOND PA	SWINDON LH.S.	A129	(128)
RIDEOUT V	CLEVEDON	* 78	(81)
RISDON J	SOUTH BRISTOL	C 71	(78)
RIVERS R	SEA MILLS	E 29	(27)
ROBERTS DM	BRISTOL GRENDEL	C142	(155)
ROBERTS KJ	KEYNSHAM	D110	(111)
ROBERTS S	BRISTOL HORFIELD	*141	()
ROBERTS SC	BRISTOL CENTRAL	A115	(96)
ROBERTS SHANE	BRISTOL CENTRAL	A133	(111)
ROBINSON M	KEYNSHAM	* 15	(34)
ROWE M	BRISTOL UNIV	*116	(116)
ROWELL J	BRISTOL GRENDEL	*125	(125)
ROWLAND D	BATH	* 60	(60)
SADLER M	SEA MILLS	* 1	()
SAGE AJ	BATH	B133	(134)
SAGE GW	WESTON S MARE	A172	(173)
SAMHROOKE T	BRISTOL UNIV	A152	(158)
SANDERS P	DOWNEND&FISHPOND	* 57	()
SANDFORD I	THORNURRY BRISTL	*114	(114)
SANDHU SS	BRISTOL SUN LIFE	E 67	()
SARKOZI T	BRISTOL OMNIBUS	*104	(124)
SARMA S	BRISTOL UNIV	*104	(124)
SARTAIN PP	KEYNSHAM	C106	(106)
SAVERY L	MARLWOOD SCHOOL	D108	(107)
SCAMMELL T	BRISTOL HORFIELD	* 39	()
SCHAEFFER GLA	CLEVEDON	E128	(135)
SCHOLDS G	SEA MILLS	D179	(189)
SCOTT AG	BRISTOL HORFIELD	* 10	(10)
SCOULDING D	DOWNEND&FISHPOND	D100	(121)
SCOULDING R	HANHAM FOLK CEN.	* 64	(54)
SCRAEGE A	SEA MILLS	D 81	()
SCRIVEN LN	THORNURRY BRISTL	* 52	()
SEARLE J	CLEVEDON	D 22	(55)
SELLERS MR	BRISTOL HORFIELD	A175	(172)
SELWAY R	DOWNEND&FISHPOND	C105	(100)
SEMENOV M	CIVIL SERVICE BL	* 40	()
SHAKESPEARE S	KEYNSHAM	E 85	(91)
SHARPLEY GD	BRISTOL GRENDEL	* 60	(60)
SHEPPARD D	SEA MILLS	C106	(103)
SHERMAN AJ	COSSHAM(BRISTOL)	*129	()
SHIPTON M	BRISTOL GRENDEL	* 74	()
SHORTLEY M	BRISTOL UNIV	* 79	(100)
SHORTWOOD G	HANHAM FOLK CEN.	A 89	(95)
SHORTWOOD J	HANHAM FOLK CEN.	* 86	(86)
SIDDORGY G	DOWNEND&FISHPOND	* 12	()
SILVERTHORN D	HANHAM FOLK CEN.	F 82	(86)
SIMONS C	COSSHAM(BRISTOL)	F 82	(86)
SIMONS C	BRISTOL UNIV	D126	()
SIMPSON D	BRISTOL UNIV	D196	(194)
SMITH A	DOWNEND&FISHPOND	*138	(122)
SMITH I	HANHAM FOLK CEN.	* 85	(85)
SMITH I	HANHAM FOLK CEN.	E 61	()
SMITH M	WINTERBOURNE	* 46	(51)
SMITH M	BATH	*143	(143)
SMITH RD	BRISTOL SUN LIFE	C142	(119)
SNATH JP	WINTERBOURNE	* 65	(76)
SNELL J	BRISTOL HORFIELD	C145	(157)
SONABEND LF	BATH	*115	(103)
SOTHEIAN GAVIN J	WORKING	C147	(164)
SPACKMAN J	HANHAM FOLK CEN.	C111	(106)
SPILLER AL MISS	CLEVEDON	*126	(121)
SPILLER BR MISS	CLEVEDON	C117	(124)
SPILLER P	CLEVEDON	C 56	(57)
SPRY J	DOWNEND&FISHPOND	D 91	(77)
STEADMAN MJ	KEYNSHAM	D165	(158)
STEPHENSON H	NAILSEA	* 85	()
STEVENS G	BRISTOL & CLIFTON	*136	(136)
STEVENSON K	HARAMBEE	D 51	(42)
STICKLEY D	HANHAM FOLK CEN.	C107	(100)
STIRLING ADAM	SOUTHAMPTON UNIV	C171	(174)
STOCKWELL S	SOUTH BRISTOL	E100	()
STONE DR	SOUTH BRISTOL	C124	(149)
STONE T	NAILSEA	C124	(116)
STRACHAN E	BRISTOL CABOT	* 10	(20)
STRICKLAND G	BRISTOL HORFIELD	D 71	(71)
STRINIVASAN M	BRISTOL SUN LIFE	* 60	(60)
STUDER ADAM	CLEVEDON	C105	(100)
STUDLEY B	DOWNEND&FISHPOND	* 29	()
STUDLEY C	DOWNEND&FISHPOND	* 95	()
SULLY RG	BRISTOL OMNIBUS	C 93	(98)
SUMMERILL D	HANHAM FOLK CEN.	A142	(137)
SUTCH D	SEA MILLS	* 22	()
TANDY CHRIS	BATH	B180	(178)
TAYLOR MA	THORNURRY BRISTL	C128	(140)
THOMAS CD	HARAMBEE	A129	(124)
THOMAS D	THORNURRY BRISTL	* 90	(90)
THOMAS HG	NAILSEA	C150	(148)

Name	Club	This	Last
THOMAS K	SEA MILLS	C117	(100)
THOMAS N	BRISTOL CENTRAL	* 28	()
THOMPSON A	CLEVEDON	D 81	(83)
THOMPSON B	BRISTOL CENTRAL	B134	(114)
THOMPSON D	HARAMBEE	D 46	(35)
THOMPSON GM	BRISTOL & CLIFTON	D104	(139)
THOMPSON K	BRISTOL HORFIELD	D 96	(115)
THOMSON J	BRISTOL & CLIFTON	E144	(148)
TIPPING D	BRISTOL UNIV	* 72	(72)
TITTERTON J	THORNURRY BRISTL	* 14	(54)
TOMLIN M	BATH	*105	()
TONKIN AJ	BRISTOL SUN LIFE	C 74	(85)
TOWERS BK	SOUTH BRISTOL	*137	(137)
TRINDER C	BRISTOL UNIV	C107	(118)
TROTT S	COSSHAM(BRISTOL)	C106	(92)
TRURAN M	BRISTOL & CLIFTON	A197	(203)
TURNER E	BRISTOL HORFIELD	A190	(172)
TURNER N	BRISTOL HORFIELD	C 96	(101)
TUSON J	BRISTOL & CLIFTON	*101	(107)
TUSON P	BRISTOL GRENDEL	D 94	()
TWINE D	BRISTOL GRENDEL	* 82	()
TYLER T	BRISTOL CENTRAL	B176	(177)
UPFINGTON D	BRISTOL UNIV	* 99	(106)
VAN DER PLANK RJ	HANHAM FOLK CEN.	* 55	(68)
VARSANI K	CLEVEDON	C112	(115)
VARSANI R	BRISTOL HORFIELD	*114	()
VOUGAS D	BRISTOL HORFIELD	*114	()
VOYSEY C	BRISTOL UNIV	*107	()
WAGNER C	SOUTH BRISTOL	* 89	(106)
WAHAB A	BRISTOL GRENDEL	*199	(199)
WALDEN P	BRISTOL CENTRAL	D130	(128)
WALKER M	BRISTOL & CLIFTON	*160	(157)
WALL T	BATH	*186	()
WALLER P	BRISTOL OMNIBUS	*116	(97)
WALMSLEY J	THORNURRY BRISTL	D 40	(29)
WALTERS D	BRISTOL HORFIELD	E 88	(91)
WALTERS P	NAILSEA	*138	(138)
WALTERS S	NAILSEA	B113	(104)
WALTERS S	NAILSEA	* 40	(40)
WARNE A	BRISTOL & CLIFTON	C131	(129)
WATSON CH	BRISTOL OMNIBUS	C159	(170)
WATTS EMMA MS	HANHAM FOLK CEN.	C 91	(77)
WEBB B	WINTERBOURNE	* 89	(97)
WEDLOCK J	NAILSEA	C 63	(73)
WEEKS CJ	SOUTH BRISTOL	A177	(184)
WELCH EE	BRISTOL & CLIFTON	C 86	(82)
WEST K	CIVIL SERVICE BL	D 79	(94)
WEST M	MARLWOOD SCHOOL	*136	(136)
WEST R	HANHAM FOLK CEN.	C117	(131)
WEST S	NAILSEA	* 90	(97)
WHEATLEY P	BRISTOL OMNIBUS	* 60	()
WHITTON R	BRISTOL & CLIFTON	* 90	()
WHITCOMBE E	BRISTOL OMNIBUS	-71	(71)
WHITE H	BRISTOL CENTRAL	*132	(133)
WHITE I	DOWNEND&FISHPOND	*125	(129)
WHITE S	BRISTOL HORFIELD	*122	(122)
WHITE S	SEA MILLS	*100	()
WHITE SD	BRISTOL SUN LIFE	E118	(118)
WHITROW K	HANHAM FOLK CEN.	* 98	(112)
WHITTAKER J	BRISTOL HORFIELD	* 94	(95)
WILCOX N	DOWNEND&FISHPOND	D 62	()
WILDENBERG G	BRISTOL HORFIELD	*161	(161)
WILL JM	BRISTOL GRENDEL	B167	(168)
WILLIAMS AH	BRISTOL HORFIELD	A174	(161)
WILLIAMS C	BRISTOL UNIV	*153	()
WILLIAMS D	CLEVEDON	C147	(137)
WILLIAMS J	KEYNSHAM	* 78	()
WILLIAMS R	HANHAM FOLK CEN.	C 55	(61)
WILLIAMS STEPH A	BRISTOL CENTRAL	*126	(126)
WILMSHURST L	KEYNSHAM	C123	(142)
WILSON D	BRISTOL & CLIFTON	C 87	(70)
WILSON D	BRISTOL HORFIELD	*126	()
WILSON R	BRISTOL GRENDEL	C 94	(85)
WILSON T	BRISTOL GRENDEL	* 82	(82)
WOLFENDEN G	HANHAM FOLK CEN.	C133	(130)
WOOD G	BRISTOL GRENDEL	D102	()
WOOD MJ	DOWNEND&FISHPOND	B141	(138)
WOODGATE M	BRISTOL UNIV	* 99	(96)
WOODHOUSE SR	BATH	*154	(127)
WOODRUFF DG	KEYNSHAM	A133	(158)
WORLOCK C	BRISTOL OMNIBUS	* 81	(75)
WRICHT G	HARAMBEE	D 72	(71)
WYATT G	BRISTOL SUN LIFE	* 93	(86)
WYNNE R	BRISTOL UNIV	D 79	(89)
YAP P	BRISTOL UNIV	B137	(118)
YEATES D	SOUTH BRISTOL	D 80	(88)
YOUNG G	SOUTH BRISTOL	*108	(110)

© 1992, British Chess Federation.

Reproduced by permission.

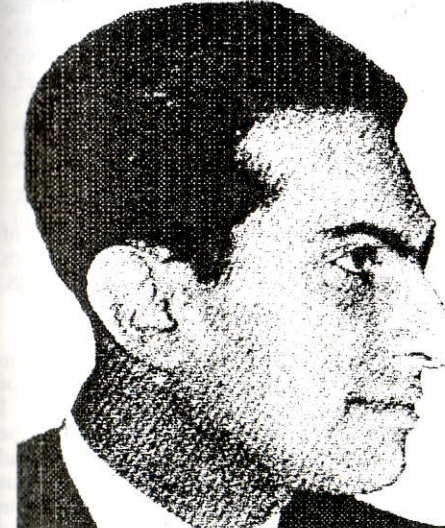
Da Sfidania, Misha

Bill Maddex

Discussing his first international tournaments in Dynamic Chess Strategy Suba says: "It was a great pleasure to be in Tal's company in these tournaments. Needless to say he won them both. This genius of the chess board is possibly the most popular and well-loved chess player of all time. He is both spirited and very friendly and, as I speak a bit of Russian, we were soon on mutual 'Misha' terms.

"During the tournament in Novi Sad we were invited to a banquet. Downing one glass after another Tal took me to task:

You don't drink very much, Misha!
I've got a tough game tomorrow, Misha.
With whom, Misha?
With you, Misha!
Da sfidania pad stalom! (See you under the table)



Mikhail Tal, 1936-1992

"Next day I played very well and drew."

There are plenty of stories about how ripped he could get and still play, and how well he could play the morning after, or coming right out of the hospital. It seems obvious that his drinking helped do him in, but it was clearly part of him.

In 1988 I had only seen two or three Tal games, (I hate to study) and had gone two tournaments without winning a game. Gross. I'd gone out to Chicago to see some friends and play. Tal was supposed to give a lecture and a simul at the U of C, but the organiser of his Chicago appearances had worked him to exhaustion, so he cancelled. I was disappointed, but not heartsunk, ignoramus-that I was (am).

In the first round of the National Open I played a 1900 player and won in about twenty moves. When the pairings for the second round went up, I didn't see my name, and was about to go ask what happened when I gave the chart a second look. Holy shit. The first thing that went through my head was "oh great, his games are up on a stage, and of course everyone's watching, so I get to get blown out like an idiot in twenty five moves." Then I thought "at least I don't want to look like a coward, so I'll just play."

Then another problem occurred to me: I'm an Orthodox Jew, so I can't keep score on Friday evenings. I went to find Schiller, the chief arbiter, to see what to do about getting someone else to keep score for me. (In USCF events you can just not keep score under these circumstances, but for FIDE rated events the rules are different.) An assistant TD materialized, and all that was left was for me to explain to Tal without looking ridiculous. He just smiled and said OK, which was just a hint of what was to come.

Bill Maddex - Mikhail Tal
Chicago National Open (2) 1988

1.e4 c5 2.♘f3

At the time I played 2.b3, but that would definitely increase my chances of losing like an idiot in twenty moves.

2...e6 3.b3 b6

Oh great, out of my own book already, boy am I gonna look dumb.

4.♘b2 ♘b7 5.♘c3

I later found out that we leave official book here.

5...♘f6 6.e5

I hadn't even considered 6.♙e2, but Tal thought that that, with the idea of castling long was interesting, showing me some neat piece play in some lines.

6...♘d5

I think this is a mistake, though after the game neither of us gave it a second thought. I get some useful space now, though I spent about fifteen minutes considering 7.♘e4, meaning I've already burned over a half hour.

7.♘d5 ♘xd5 8.c4 ♘b7 9.♘e2 ♘c6 10.0-0 ♙c7 11.♞e1

This took me about fifteen minutes, mostly spent looking at stuff after 11.d4 cxd4 12.♘xd4 ♘xc5 13.f4 ♘c6, which just confused me and which a rather obnoxious category A player back home said showed what a fish I am. I also wasn't crazy about 12...♘xd4, when it seemed like Black's king will be safe and his bishops are better.

11...d6

I'm pretty sure this is wrong; Black will lose a lot of time and some lines will open up against him, but now I gotta sac something against Tal...I was even more nervous than before, for no good cause, and burning clock for nothing...

12.d4 cxd4 13.♘xd4 dxe5

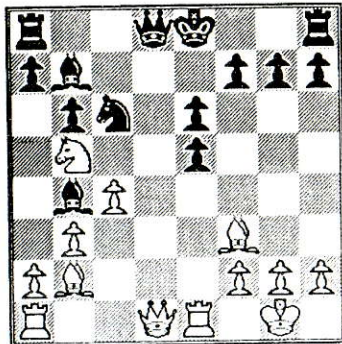
13...♘xc5 14.f4 is a disaster for Black, and the text ain't too happy either, so he probably should take on d4 and live with

being a little worse after 14 ♙xd4.

14.♘b5 ♙d8 (ugly, but forced) 15.♘f3

Now I'm really nervous, because I'm pretty sure I have a big edge. White can get the Pawn back at will and, whether or not Black trades queens, White's pieces will be better...

15...♘b4



Great, just what I was afraid of, now I gotta figger out all kinds of crap; 16.♘xc5 looks good, as does 16.♞xc5. Half an hour later I copped out leading the above mentioned arrogant A player to declare again what a fish I am... I had calculated all kinds of junk and of course after the game Tal showed me about a hundred [no exaggeration] times more stuff I hadn't seen. After 16.♞xc5 White keeps an initiative, but as he said,

16.♞e3

"is also very interesting move"

16...0-0 17.♞d3 ♙h4 18.♙e2

In the post mortem he gave me a bunch of quizzes, including why not 18.♞d7, which led to some weird tactics after 18...♞ad8.

18...♞fd8 19.♞ad1 ♘c5

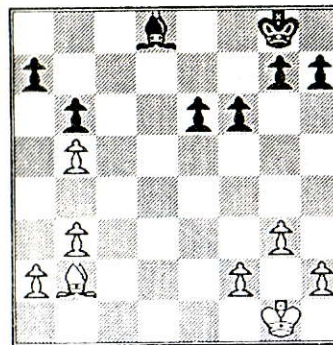
Uh oh, now things are quite messy, and he has all these shots like ...♘d4, and I've got barely over fifteen minutes to move 45... I looked at various ways to try to keep the initiative, but failed, and the clock had freaked me 100%. We looked at various moves after the game, further aweing me in terms of just how much he saw, and concluded that Black can hold after

20.♞d7! a6! though it's tough. I now think White actually wins, but it doesn't matter, I'd found a way to ditch out to a bad but drawable ending, so...

20.g3 ♙e7

Gee, and I'd gone under ten minutes making sure I didn't get trashed after 20...♙h3

21.♘g2 ♘d4 21.♘xc6 ♞xd3 22.♞xd3 ♘xc6 23.♙xe5 f6 24.♙c7 ♘xb5 25.♙xe7 ♘xe7 26.cxb5 ♞d8 27.♞xd8+ ♘d8



Well, at least that was all forced so I've still got over nine minutes. If only I'd known what the hell I was doing or stopped here for two minutes to think, I'd probably have found 28.f4, to restrain ...e5, and brought my king up and drawn easily. Instead I came up with the impossible idea of trying to get rid of the queenside, and proceeded to play like an 1800, meaning my fifteen moves of fame were out the window.

28.a4

As he said, "of course it is still draw, but..." [gesture toward clock]

28...e5 29.♙f1 ♙f7 30.♘c3 ♙e6 31.♙e2 ♙d5 32.f3 f5 33.h3 h5 34.♘b2 ♘e7 35.♘c3 g6 36.♘d2

Idiotic, probably throwing out my last chance to draw, but I've obviously lost it at this point.

36...♘d4 37.a5 (gag) 37...♙c5 38.axb6 axb6 39.♙e3 ♘d6 40.♘c3 ♙xb5 41.f4 ♘c5+ 42.♙e2 ♘d4 43.♘d2 ♙c5 44.fxe5 ♘xe5 45.♙f3 b5 46.g4 ♙d4 0-1

I should, of course, have resigned earlier, but I finally got the meaning of the cliché 'no time to resign' and, after I made control, Tal got up for a smoke, so I got up for a stretch. When I resigned, he was very nice about it, said I'd missed several chances and proceeded to blow my mind showing me all the stuff he saw in the complications. It was about midnight when I gave up, and there were no other games going on, but about twenty people materialized out of nowhere after I resigned to watch the post mortem. Tal was open to suggestion, and didn't mind at all that all these people were there. The NCAA tournament was on big screen right outside of the tournament room, and around move 35 there was a loud cheer. Tal looked up with a puzzled expression, but when I said "basketball" he grinned widely and nodded.

Throughout the tournament, even during his games, people came up to him asking for autographs, and he never complained. Thad Rodgers must have sold every book he had on Tal, and I'm sure every one got signed. I, of course, hadn't put one in my luggage and didn't have the money to get another, so I asked him to sign my xeroxed copy of the Nezmetdinov's best games. He looked a little puzzled, looked at the title page, grinned and signed it. He also gave me his scoresheet of our game.

I found out that he had told a certain third party, unbeknownst to me, that I had real talent, which struck me as amazingly gracious considering what a moron I looked like in the ending. I got to go to his party after the last round and he asked me what I read and stuff; he actually seemed interested.

A friend of mine who spoke to him during the tournament said they had talked about Mark Twain.

After getting home, I of course started reading his autobiography, and noticed that after one hospitalization in the late 60s he had been reported to have died, and replied with Twain's reports of my death have been greatly exaggerated.

I really wish that were true now.

Da sfidania, Misha.

Radford and Summerill tie for first

Terry Marke

It was gratifying that as many as ten clubs were represented this year in Section Two of the League Congress, including the thriving Harambee club, and, of course, Cossham, albeit by yours truly only. This was despite the Frome Congress being held over the same weekend, and the fact that so many players go into a post league season aestivation.

The popular Horfield and Montpelier, now known as Horfield and Redland, sent the largest number of players in all sections - including Section Two, with formidable players such as Brian Crewe, Howard Millbank, and the relentless Jim Draisey. Jim knocked out the highest rated player, Jeremy Hendy (143), in the first round. Jason Able, an intelligent student from Down Under, playing now under the Clevedon flag, unfortunately had to retire after the first round because of illness.

Shane Roberts and Mike Pearce, playing for the last time under the Bristol Central colours, both came out with respectable scores of three points each after some very fraught games.

You will probably enjoy the following touch of serendipity, where Barry Thompson smashed Jeremy Hendy's Caro Kann in eighteen moves in the last round. I guess it wasn't your day, Jeremy! Nice one, Barry!

Barry Thompson - Jeremy Hendy Bristol League Congress Section 2 (5) 1992

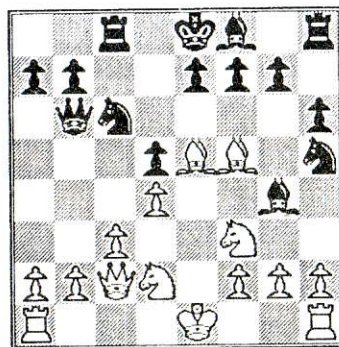
1.e4 c6 2.d4 d5 3.exd5 cxd5 4.♘d3 ♖f6 5.c3 ♗c7 6.♘g5 ♖c6 7.♘d2 ♘e6 8.♖g3 h6 9.♘h4 ♘g4 10.♘g3 ♗b6 11.♗c2 ♖h5 12.♘e5 ♖c8 13.♘f5!

See diagram in next column.

Section



Bristol League Congress



13... ♘f3 14.♘xc8 ♖xe5 15.dxe5 ♗c7 16.♗a4+ ♖d8 17.♖xf3 ♗xc8 18.g4! 1-0

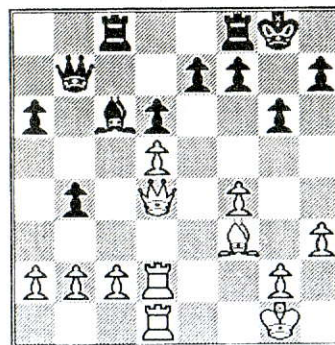
The following game, with annotations by the winner, lead to Bob Radford gaining

equal first with Dave Summerill, and consigned Mike Collier to third place. Bob Radford took the trophy on tie break.

Bob Radford - Mike Collier Bristol League Congress Section 2 (5) 1992

1.e4 c5 2.♖f3 d6 3.d4 cxd4 4.♖xd4 ♘d7 5.♖c3 g6 6.♘e3 ♘g7 7.♗d2 ♖f6 8.♘e2 ♖c6 9.0-0 ♖c8 10.f4 0-0 11.h3 ♖xd4 12.♘xd4 ♘c6 13.♘f3 a6 14.♖ad1 b5 15.♗e3 ♗c7 16.♖f2 ♗b7 17.♖fd2 b4 18.♖d5 ♖xd5 19.exd5 ♘xd4 20.♗xd4

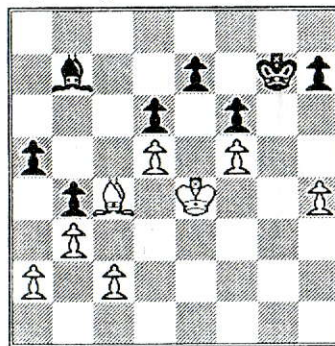
I felt good with this position, having obtained a space advantage.



20... ♘d7 21.g4 ♖c7 22.♘e4 ♗a7 23.♗xa7 ♖xa7

Even with the queens off, Mike's position looks worse.

24.♖d4 a5 25.♗g2 ♖c7 26.♘d3 ♘c8 27.♖c4 ♖xc4 28.♘xc4 ♘b7 29.♗g3 ♖c8 30.b3 ♗g7 31.♖e1 ♖c7 32.h4 f6 33.♗f3 ♖f7 34.f5 gxf5 35.gxf5 ♖c8 36.♖g1 ♖g8 37.♖xg8 ♗xg8 38.♗e4 ♗g7



From here onwards, I believed I would win. Provided I kept my discipline, the central pawns were locked, leaving me with 3 v 2 pawns on the queenside - my chance for the win.

39.♗d4 ♗f8 40.h5 h6 41.♘b5 ♘c8 42.♘d3 ♗e8 43.c3 bxc3 44.♗xc3 ♗d8 45.b4 a4 46.b5 ♗c7 47.a3 ♗b6 48.♗b4 ♘b7 49.♘e4 ♘a8 50.♗xa4

Black now looks completely lost. Even if he sacrifices his bishop for the two passed pawns it would not help as the White ♘ controls all the squares around the central pawns. Eventually, White's ♗ and ♘ would drive the Black ♗ away.

50... ♗c5 51.♗a5 ♗d4 52.♘f3 ♘b7 53.♗b6 ♘c8 54.♗c7 ♘xf5 55.b6 e5 56.b7 e4 57.♘xe4 ♘xe4 58.♗xd6 1-0

Commiserations to Clive Parker and Devon Thomas, who did not do well on this occasion but have had successes in other recent events. Also to Tony Durrant, who may have found Section Two a bit too strong for him.

Congratulations to Bob Radford and Dave Summerill for pulling it off! Well done, lads! See you next year.

Placings: 1-2 R Radford (South Bristol), D Summerill (Hanham) 4 pts; 3 M J Collier (Cabot) 3.5; 4-8 H Millbank, J Draisey (Horfield), B Thompson (Grendel), S Roberts, M Pearce (Central) 3; 9-11 J Hendy (Keynsham), B Crewe (Horfield), C Parker (South Bristol) 2; 12-14 T Marke (Cossham), D Thomas (Harambee) 1.5; 15 J Able (Clevedon) withdrew ill 0.

Hannover just scrape it

HANNOVER PLAYED HOST to Bristol in this year's sporting exchange from 2nd-5th October. Bristol's Paul Helbig did well in the Friday blitz tournament, finishing second to Hannover's Michael Gründer, but the Germans proved just too strong in the serious matches on Saturday and Sunday and Bristol lost each by the score of 4½-3½. The Bristol team was Huw Oliver, Paul Helbig, David Twine, Chris Hunt, John Richards, Ted Freeman, Steve Boniface and Bob Bagshaw.

My Seven Memorable Games

Alan Ashby

Alan Ashby continues his tour through his favourite games.

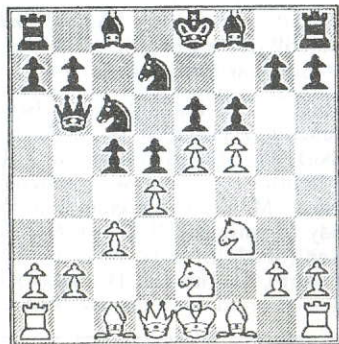
Game Three

Alan Ashby - Alex Easton

Clifton A-University B, Bristol League 1980
French Defence

Some months before this game was played, Alex said to me 'Mike Truran plays the Benoni more aggressively than you' - which was like a red rag to a bull. Hence my somewhat uncharacteristically cavalier style in this game.

1.e4 e6 2.d4 d5 3.♖c3 ♖f6 4.e5 ♖fd7
5.♖ce2 c5 6.c3 ♖c6 7.f4 f6 8.♖f3 ♖b6
9.f5!?



As far as I know, this move should be attributed to Keith Arkell, who played it in the British U-18 championship at Ayr in 1978. In fact, it's not entirely sound, as someone showed in a later game against me. I can't remember the refutation now, but I shan't be playing the line again.

9...cxd4 10.fxe6 [Not 10.cxd4? ♖b4+]

10...♖dx6 11.♖f4

If 11.♖exd4 ♖c5=

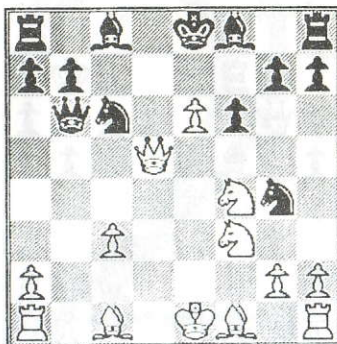
11...dxc3

If 11...♖g4 12.♖xd5 ♖c5 13.♖c7+ ♖e7
14.♖xa8±

12.bxc3 [if 12.♖xd5 cxb2!] 12...♖g4 [if
12...♖c5 13.♖xd5±]

13.♖xd5

If 13.♖d4? ♖xd4 14.cxd4 ♖b4+ 15.♖e2
♖xc6±



13...♖f2+

If 13...♖c5 14.♖b5! ♖xc3+ 15.♖d2!±

14.♖d1 ♖e3+

If 14...♖c5 15.♖b5 ♖f2+ 16.♖e2 ♖xh1
17.♖d4 e.g. 17...♖xd5 18.♖xd5 ♖d6
19.♖xc6 ♖xc6 20.♖d4+ ♖f7 21.♖xc6
♖xc6 22.♖f4±

15.♖xe3 ♖xe3 16.♖b5 ♖c5

If 16...♖xf4 17.♖xc6+ ♖e7 18.♖xb7±

17.♖d4 ♖xd5 18.♖xd5 ♖d8

If 18...♖b8 19.e7!±

19.♖xc6 bxc6 20.♖xc6+ ♖e8 21.♖c7+ #
1-0

I was very proud when the late Dr Jim Aitken awarded this game the Bristol and Clifton brilliancy prize for 1979-80, with the words, "White's play demonstrates the advantage of the two knights over the two bishops!"

To be concluded next issue

BCF ■ BRITISH CHESS FEDERATION ■ BRITISH CHESS FEDERATION ■ BRITISH CHESS FEDERATION ■ BCF

WANTED BCF DIRECT MEMBERS !!

The British Chess Federation needs your support to keep England in the forefront of the chess world and to help foster the development of chess in this country.

THE BCF's ACTION PLANS FOR THE 90's INCLUDE:

- Promoting more chess for all ages, Women and Girls, Men and Boys
- Encouraging top players to play internationally
- Providing facilities for junior training

EXCELLENT BENEFITS FOR DIRECT MEMBERS INCLUDE:

- "ChessMoves" monthly newsletter
- Automatic player registration
- Grading details - free "print out"
- Annual Year Book
- Discounts on selected tournament entry fees
- Chess Book Club

Subscription for Full members is £25 pa. Other categories of membership include Corporate Vice Presidents, Family, Veterans and Students.

Please write or telephone for further details to :-

British Chess Federation,
9a Grand Parade,
St Leonards-on-Sea,
E. Sussex TN38 0DD.

(0424-442500)

JOIN NOW, SUPPORT OUR WORK AND ENJOY THE BENEFITS OF MEMBERSHIP

BCF ■ BRITISH CHESS FEDERATION ■ BRITISH CHESS FEDERATION ■ BRITISH CHESS FEDERATION ■ BCF

Diary

Use this column to advertise your events. It's free, but please send your entries in plenty of time to the Editor.

1992

Nov 9. Individual KO entries close. Chris Carter, 0272 245443 (6-7pm, Mon-Fri).

Nov 14. Glos v Dorset, Wilts v Somerset

Nov 20-22. TORQUAY. 27th Torbay Congress. New venue. Contact: Phil Short, Flat 4, Ellacombe Court, Ellacombe Church Road, Torquay, TQ1 1LJ. Tel: 0803 214766.

Dec 1. HORFIELD 50th birthday celebration. Simul by GM Stuart Conquest. See pages 4 and 8.

Dec 5. Hants v Somerset, Devon v Glos

Dec 6. STROUD Quickplay. 4 sections. Contact: Stroud 762518 or Painswick 812263 (upto 6pm) or Gloucester 414196. 1993

Jan 16. Glos v Wilts, Somerset v Devon

Jan 25-29. Bristol Team KO quarter-finals.

Jan 29-31 (provisional). HANHAM Congress.

Feb 6. Somerset v Cornwall, Hants v Glos

Feb 13. TAUNTON. WECU Junior Jamboree at Ladymead School

Subscribe now to...

Bristol CHESS TIMES

Bristol Chess Times carries all the news about local chess.

Make sure you don't miss any of the great items coming in the next few issues.

Send £8.00 for ten issues (posted to your home), or £6.00 for ten issues (sent to your Bristol League club) to:

The Editor, Bristol Chess Times,
7 Maycliffe Park, Bristol, BS6 5JH

Cheques or POs should be made payable to *The Bristol & District Chess League.*

Find Tal's Moves - Answers

A: 1...♙xf7! 2.♙xf7+ ♖h8 3.♙g1 ♙xf1+
4.♙xf1 [if 4.♙xf1 ♙e1+#] 4...♙e1 0-1.

B: 1.♙b7+!! ♙xb7 2.♙d7+ ♖b8 3.e8♙+
♙xe8 4.♙xe8+ ♖b7 5.♙d7+ ♖b8
6.♙xc6 1-0.

C: 1...♙b7! 0-1 if 2.♙g2 ♙d2 3.♙b3
(3.♙f2 ♖xf2+ 4.♙xf2 ♙d1+) ♖xg3+!

D: 1.♙xf7! ♙a1+ [1...♙xf7 2.♙xd8+]
2.♙d2 ♙xf7 [2...♙xd1+ 3.♙xd1 ♙xf7
4.♖xf7+ ♙g8 5.♖xd8] 3.♖xf7+ ♙g8
4.♙xa1 ♖xf7 5.♖e5+ ♖e6 6.♖xc6 ♖e4+
7.♖e3 ♖b6+ 8.♙d4 1-0.



THE COMPLETE SECRETARIAL SERVICE

- * CVs
- * FAX
- * TYPING
- * COPYING
- * PRINTING
- * WORD PROCESSING

ESTABLISHED 1934

EVEREST

BRISTOL

(0272) 246248

Fax: (0272) 248065

195 Cheltenham Road, Bristol BS6 5QX